

## INTAVI MF-11

<b>Description</b>	: UV stabilizer masterbatch for mulch film
<b>Application</b>	: Blown film, extrusion for PE and PP
<b>Carrier Resin</b>	: Polyethylene
<b>Active Content</b>	: 10 %
<b>Addition Level</b>	: 1 - 3 %

### Physical Properties

Item	Test Method	Unit	Product Specification
Melt Flow Index	ASTM D – 1238 ( 190 °C / 2.16 kg )	g / 10 min	32 – 52
Specific Gravity	JIS K 7112	-	0.88 – 0.94
Moisture Content	ASTM D 6980-12	%	< 0.1

### Packaging

INTAVI MF-11 is supplied in pellet form, in 25 kgs double layered bags, consisting of plastic PE bag as inner layer and PP woven laminated paper bag as outer layer.

### Storage

INTAVI MF-11 should be stored in a dry environment. Opened bag should be kept tightly to prevent contamination of the product.

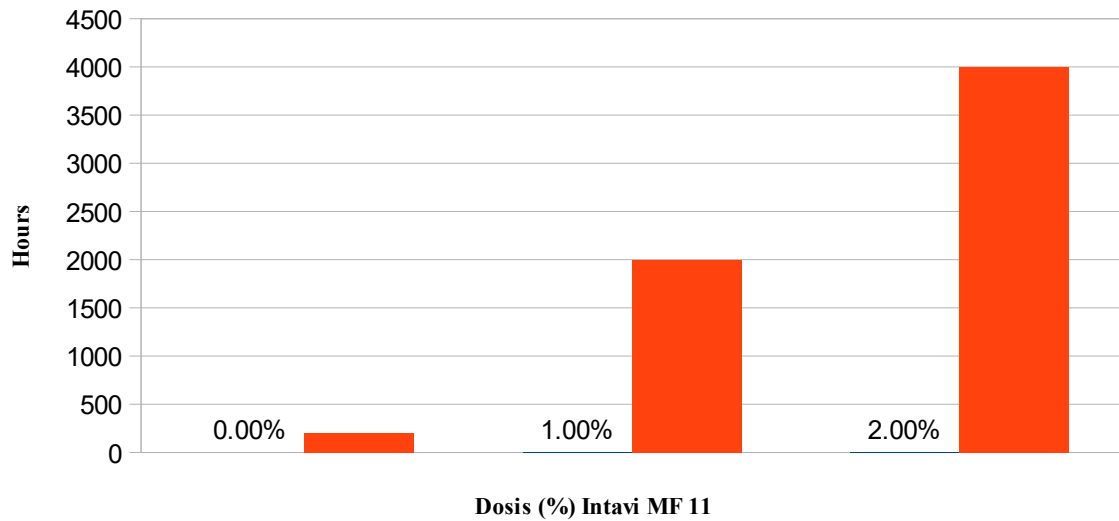
04/IX/21/INTAVI-MF-11

These suggestion and data are based on information we believe to be reliable. They are offered in good faith, but without guarantee, as conditions and methods of utilization of our products are beyond our control. We recommend that the prospective user determine the suitability of our materials and suggestions before adopting them on a commercial scale.

## INTAVI MF 11 on PP Homo Polymer Film 500 um

**Polymer** : PP Homo Polymer with basic stabilization of proper antioxidant  
**Thickness** : 500 micron  
**Exposure** : Atlas Weather-Ometer Ci 65 @ 65 C  
**Test Criterion** : Hours to 50% Elongation

### Intavi MF 11 on PP Homo Polymer Film 500 um



Note : Because of the inherent variability and complexity of outdoor exposure situations, the hours data in this data is not reflect the actual hours in outdoors exposure. Weathering data is only a comparative data, not absolute data.

**04/IX/21/INTAVI-MF-11**

These suggestion and data are based on information we believe to be reliable. They are offered in good faith, but without guarantee, as conditions and methods of utilization of our products are beyond our control. We recommend that the prospective user determine the suitability of our materials and suggestions before adopting them on a commercial scale.